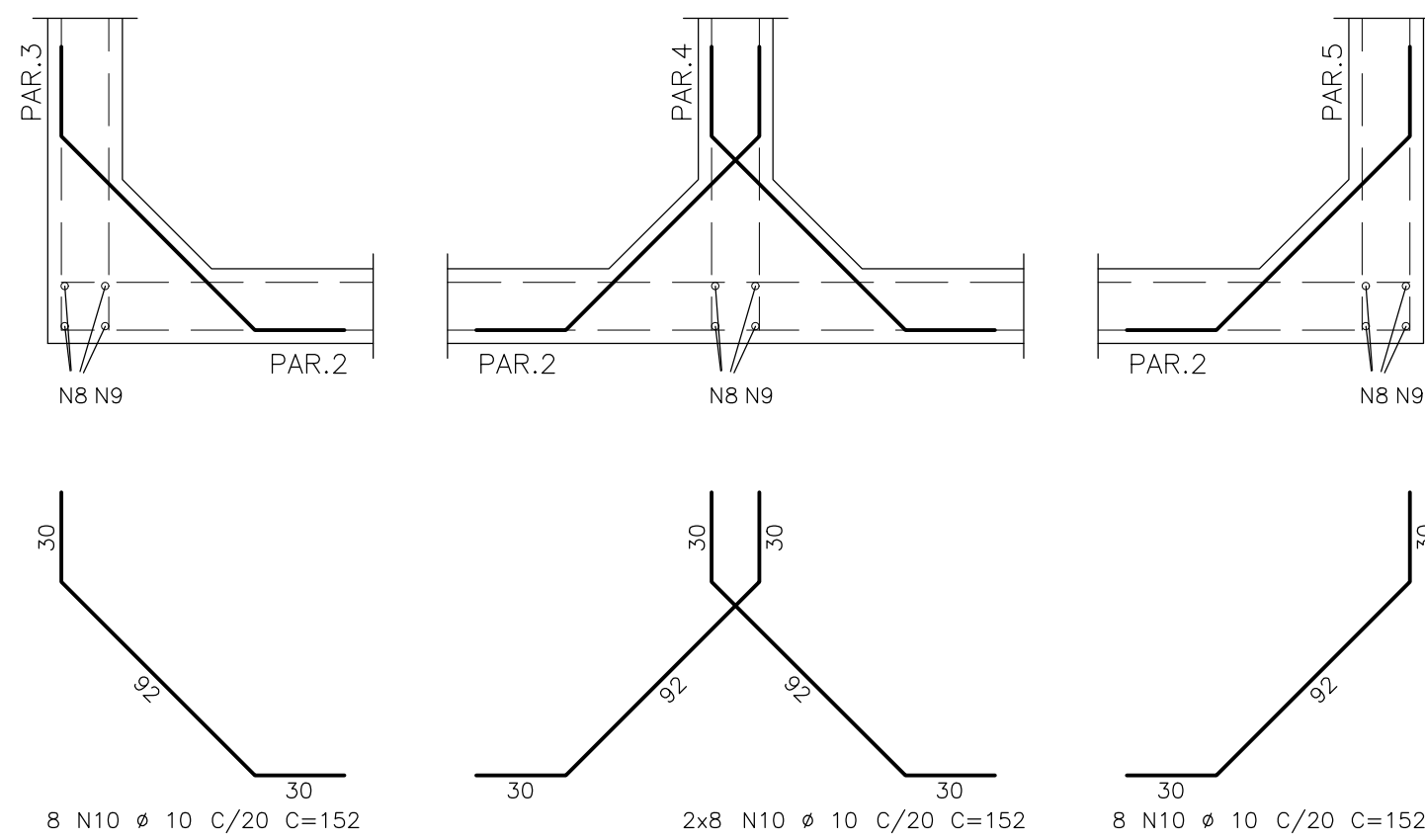


(Planta)

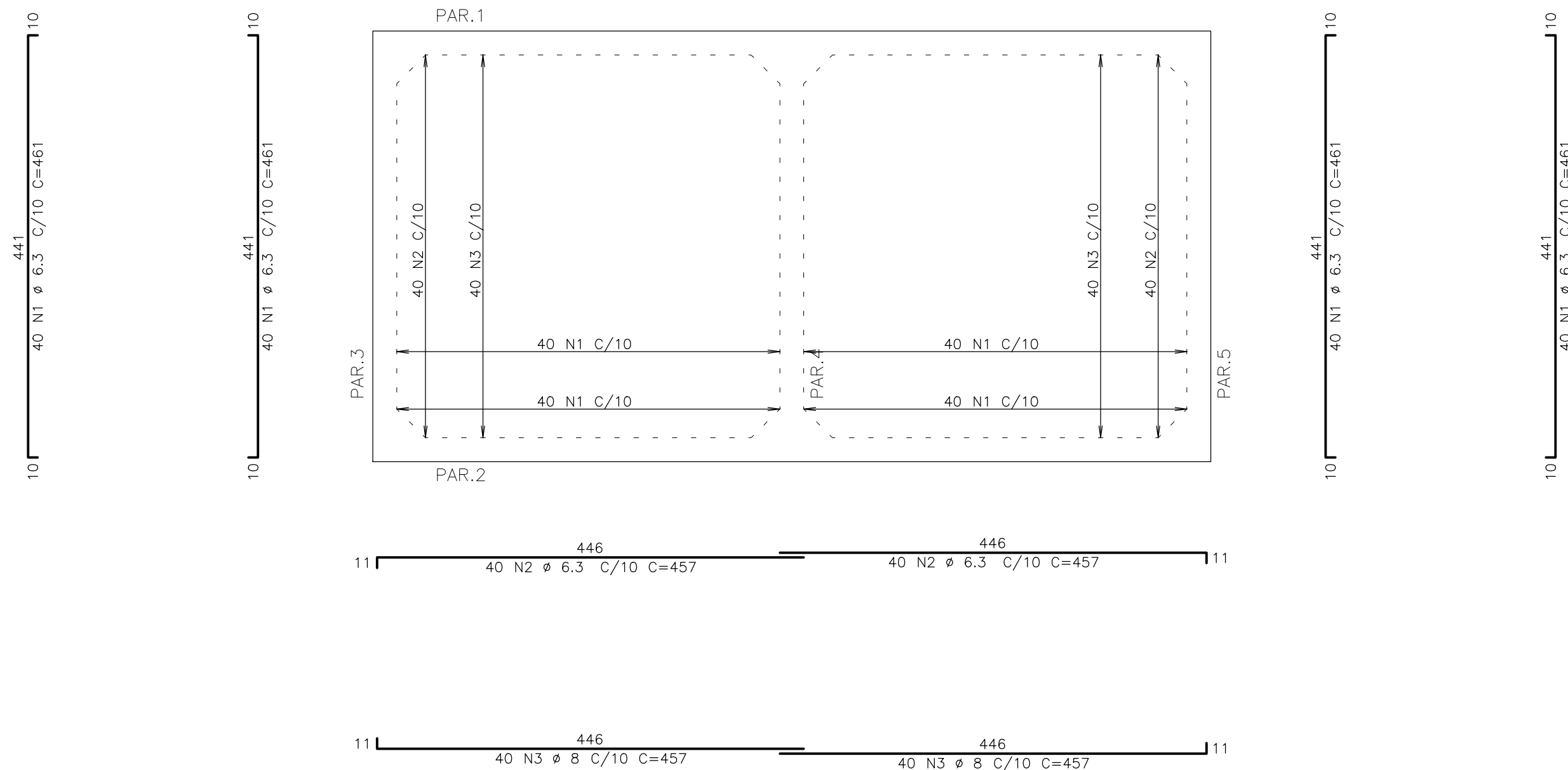


	AÇO	POS	BIT (mm)	QUANT	COMPRIMENTO	
					UNIT (cm)	TOTAL (cm)
ARMAÇÃO DO FUNDO DO RESERVATÓRIO						
	50A	1	6,3	160	451	73760
	50A	2	6,3	80	467	36560
	50A	3	8	80	457	35660
PAR. 2						
	50A	1	12,5	8	898	7184
	50A	2	10	8	894	7152
	50A	3	8	8	974	7792
	50A	4	10	40	145	5800
	50A	5	10	40	244	9760
	50A	6	10	80	152	12160
	50A	7	10	40	125	5000
	50A	8	10	12	136	1632
	50A	9	10	12	104	1248
	50A	10	10	32	152	4864
PAR. 4						
	50A	1	12,5	8	473	3784
	50A	2	10	16	549	8784
	50A	3	8	80	133	10640
	50A	4	10	20	244	4880
	50A	5	10	16	152	6080
	50A	6	10	20	244	4880

RESUMO AÇO CA 50-60			
AÇO	BIT (mm)	COMPR (m)	PESO (kg)
50A	6.3	1103	270
50A	8	472	186
50A	10	800	494
50A	12.5	110	106
Peso Total		50A =	1056 kg

ESCALA: 1/50

(LAJES  $h=20\text{cm}$ )



25/200

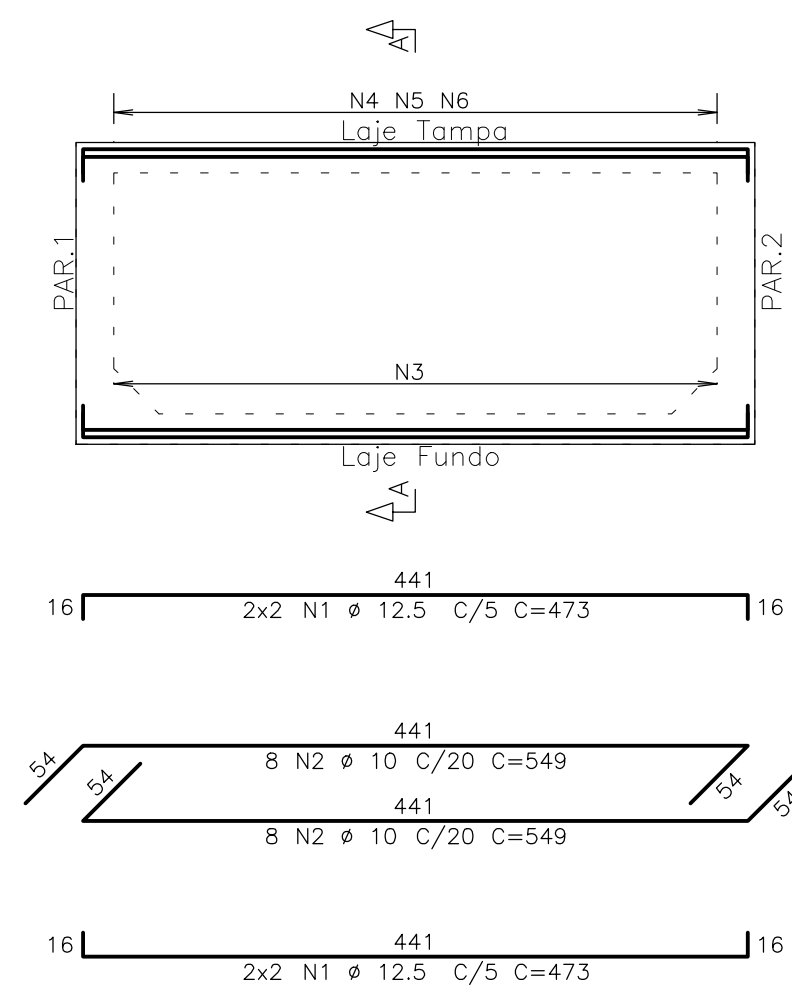



Figure 1 shows three detail drawings of the reinforcement layout for the column and slab. The top drawing is a plan view of the column, showing a square cross-section with reinforcement bars N1, N2, and N3. The side view shows the column with reinforcement bars N4, N5, and N6. The slab detail shows a cross-section of the slab with reinforcement bars N1, N2, and N3. Dimensions are provided for all bars and sections.

fck 250. kg/cm2

 <b>Schuring &amp; Schuring</b>	<b>Schuring &amp; Schuring Ltda.</b> Escritório Técnico B.E.SCHURING – Projetos de Engenharia Av. XV de Novembro, 489 – Porto 20, Andar – Curitiba MT Fone:(065) 321 8959 – Fax:(065) 623 5066 – Email – schuring@terra.com.br		
	PROJETO:	OBRA: <b>EMEB ALINO FERREIRA MAGALHAES</b> <b>OBRA INSTITUCIONAL EDUCACIONAL</b>	
	PROPRIETARIO: <b>PREFEITURA MUNICIPAL</b> <b>VARZEA GRANDE MT</b>		
	RESP. TEC. EXECUCAO:  	END: <b>AV. Verdão esq. c/ Rua "B"</b> <b>PARQUE DO LAGO – VARZEA GRANDE</b>	
<b>PROJETO ESTRUTURAL</b>	AUTORES DO PROJETO:  <b>Benedito Eliseu Schuring</b> Eng. Civil – CREA 715/D—MT	ASSUNTO:  <b>SISTEMA SEMI INTERRADA</b>	
	<b>Andre Luiz Schuring</b> Eng. Civil – CREA 8697/D—MT	PEGAS DETALHADAS <b>ARMAÇÃO DO FUNDO DO RESERVATÓRIO</b> <b>PAR.2 / PAR.4</b>	
		FOR:  ESCALA: <b>1:50</b>	DIREITOS AUTORAIS RESERVADOS <b>VERIFIQUE MEDIDAS NA OBRA</b> ARQUIVO:  22/05/2017
			FOLHA No.  <b>77</b>